

FIRST®

AGE™

PRESENTED BY **Qualcomm**

September Coaches Chat

FIRST **AGE**

PRESENTED BY
Qualcomm

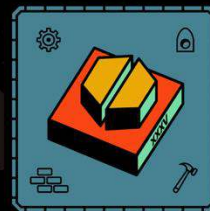


UNEARTHED



DECODE

PRESENTED BY  **RTX**



REBUILT

PRESENTED BY  **HMS**

2025 / 2026 SEASON

Welcome FLL Challenge & FLL Explore Teams!

Jacqueline Grimm jacqueg@firstwa.org

Senior Program Manager | *FIRST* Washington

Natalie Janson Schmitz nataliej@firstwa.org

Volunteer and Program Support | *FIRST* Washington

Heather Bioren hbioren@gmail.com

Kevin Torrico fllheadreferee@firstwa.org

WA State Coach Advisor | *FIRST* Washington

WA State Head Referee | *FIRST* Washington

Aaron Schmitz

WA State Judge Advisor | *FIRST* Washington



UNearthED



DECODE
PRESENTED BY RTX



REBUILT
PRESENTED BY JANS

Agenda-

- FLL Blog
- Coaches Chat Format Change
- Registration
- Invoices
- Season Timeline and Important dates
- Participation rule reminder
- Event Locations
- Event Schedules
- Important links
- Questions?

Please make sure to check the *FIRST* Washington website and the FLL Blog for all *FIRST* Washington information

Blog's are posted weekly.

An email is sent out with a brief list of what is included and a link to the blog.

<https://firstwa.org/fll-blog/>

Coaches Chat Format Change-

This season I will be switching things up a bit.

I will do a few meetings throughout the season with slides and info.

- Beginning of the season- September
- Before Qualifiers- November
- Before Semifinals/State- January

The rest will be informal drop-in meetings with no presentations where you can come and ask whatever questions you have. You don't need to sit through a presentation. All information is in the FLL Blog.

- October
- December

I may schedule additional drop-in times in addition to the once a month. I will post the info in the blog!



Season Timeline Challenge and Explore-

May-

- Team Registration Opens

August-

- Challenge Released

September-

- Event registration opens
- Team registration closes for FLL **Challenge**

October-

- *FIRST* Washington invoices go out

December-

- Qualifier Competitions For FLL **Challenge**
- First Festivals for FLL **Explore**

Jan/Feb-

- Semifinal/State Competitions for FLL **Challenge**

March-

- Spring Festivals for FLL **Explore**

April-

- World Festival

Important Dates for FLL Challenge!

September-

Now- *FIRST* Washington Registration and Grant open

26th- *FIRST* Washington Grant Closes

30th- Team registration closes

October-

Early Oct. *FIRST*WA invoices go out

25th- payment or P.O. must be received
by

December-

6th/7th - Qualifier weekend 1

13th/14th -Qualifier weekend 2

January

24th/25th -Semifinals*

February

1st - Western WA State Championship

TBD

Eastern WA State Championships

**Western WA only*

Important Dates for FLL **Explore!**

September-

Late Sept.-

Event registration opens

October-

Mid Oct.- First set of *FIRST*WA invoices go out

December-

6th/7th - Winter Festival events

March

Spring Festival Events

April*

Registration closes

**Possible end of the season Festival depending on interest*





UNEARTHED



DECODE
PRESENTED BY RTX



REBUILT
PRESENTED BY JANS

Participation Rule Reminders for FLL Challenge-

Some highlighted rules-

- All work presented at events is the work of the children on the team.
- A competitive team consists of a minimum of two (2) and a maximum of ten (10) children listed on your team's roster.
- A team must be registered and fully paid in their national registration system to sign up for official events. Additional regional/local event fees may apply. (Washington charges a local fee of \$350)
- All team members attending an event are required to participate in the judging session and be present as a team at the Robot Game matches.

To read the full participation rules-





UNEARTHED



DECODE
PRESENTED BY RTX



REBUILT
PRESENTED BY JANS

Participation Rules Cont.

Consequences

FIRST® gives authority to volunteers staffing FIRST® LEGO® League Challenge official events to interpret and implement the Participation Rules, guided by global FIRST® LEGO® League Challenge training materials.

- Teams, coaches, and supporters at official events are expected to demonstrate the Core Values and Gracious Professionalism®.
- Individuals interfering with, excessively instructing, prompting, or heckling a team or volunteer may be asked to leave.
- Severe infractions of these rules may result in a team's dismissal from the event. FIRST® LEGO® League Challenge official event volunteers are provided training to identify and respond to these situations (See FIRST® Youth Protection Policy).
- Individuals and/or teams who fail to abide by the Participation Rules may be ineligible for awards at a tournament. – **this includes having too many youth on your roster!**

Registration-

Team Registration-

- Open now at firstinspires.org

FIRST Washington Registration-

- Open now at firstwa.org

Event Registration-

- For **Explore** - Coming soon, mid to late September. Fingers crossed!
- For **Challenge** – Same process as last season

***FIRST* Washington Invoices-**

Invoices for the *FIRST* Washington fees will go out in early to mid October. They will be emailed out to the person you listed on your *FIRST* Washington registration in the “Name of person who should receive *FIRSTWA* invoice” section.





Event Locations- Challenge



UNearthED



DECODE
PRESENTED BY RTX



REBUILT
PRESENTED BY JANS

Not all venues are confirmed yet.

As soon as they are I will post the event schedule on *FIRSTWA.org*!

Event Locations- Explore

Not all venues are confirmed yet.

As soon as they are I will post the event schedule on *FIRSTWA.org*!

Qualifier Event Schedule- **Challenge**

This is general info. You will receive an email from your event host with specific details.

- Doors will open for check in at 8
- Check in is from 8-8:30
- Coaches meeting 8:30
- Practice time 9-12
- Judging 9-12:30
- Opening Ceremonies 1:00
- Qualification matches 1:15-4:15
- Awards 4:30

Festival Schedule- Explore

Check in

Set up display

Opening Ceremony

Reviewing Begins

Activity

Closing Celebration and Awards

Cleanup

**Festivals can be run either in the morning or the afternoon, but are most often run in the afternoon*

Important Links-

Team Registration- Both **Challenge** and **Explore**

- <https://www.firstinspires.org/robotics/fll/cost-and-registration>

FIRST Washington Registration-

- **Challenge**- <https://firstwa.org/challenge-registration/>
- **Explore**- <https://firstwa.org/explore-registration/>

FLL Blog-

- <https://firstwa.org/fll-blog/>



Next Coaches Chat- October 15th, 2025

Questions?