

FIRST®

AGE™

PRESENTED BY **Qualcomm**

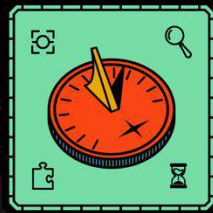
January Coaches Chat

FIRST AGE

PRESENTED BY
Qualcomm

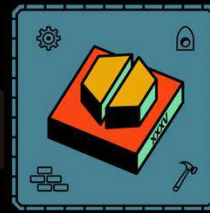


UNEARTHED




DECODE

PRESENTED BY  **RTX**



REBUILT

PRESENTED BY  **HMS**

2025 / 2026 SEASON

Welcome FLL Challenge & FLL Explore Teams!

Jacqueline Grimm jacqueg@firstwa.org

Senior Program Manager | *FIRST* Washington

Natalie Janson Schmitz nataliej@firstwa.org

Volunteer and Program Support | *FIRST* Washington

Heather Bioren hbioren@gmail.com

Kevin Torrico fllheadreferee@firstwa.org

WA State Coach Advisor | *FIRST* Washington

WA State Head Referee | *FIRST* Washington

Aaron Schmitz

WA State Judge Advisor | *FIRST* Washington



UNEARTHED



DECODE

PRESENTED BY RTX



REBUILT

PRESENTED BY HANS

Agenda-

- Volunteers Needed
- Roster Info
- Semifinal info
- State info
- What's after state?
- Important links
- Questions?



PRESENTED BY Qualcomm



UNEARTHED



DECODE

PRESENTED BY RTX



REBUILT

PRESENTED BY HANS

FLL Volunteer Opportunities

We need volunteers for FLL Semifinals!
Please share this information with your teams...we'd love to
have them join us at an event!

Volunteer Needs:

- **Judges** (minimum 18 y.o.)
- Referees
- Scorekeepers
- Field Resetters
- Queuers

FLL Challenge Volunteering Opportunities

Sign up through your *FIRST* Inspires Dashboard

OR

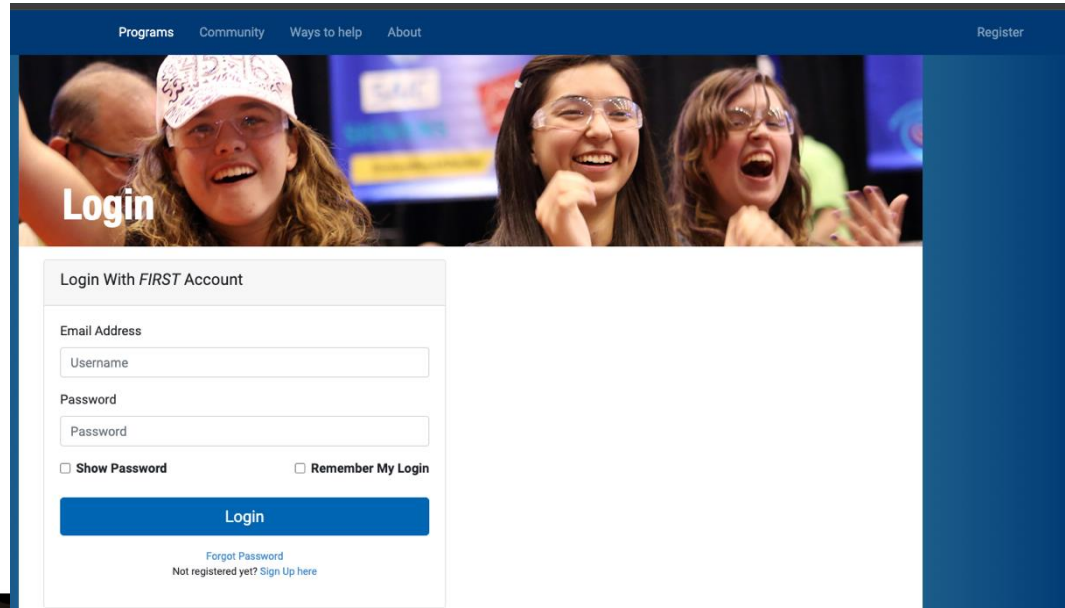
<https://www.firstinspires.org/team-event-search>

OR

Email nataliej@firstwa.org

Printing your Roster- both **Challenge** and **Explore**

You access your roster from your FIRST Inspires Dashboard. You go to log in here-

A screenshot of the FIRST Inspires website's login page. The page has a dark blue header with navigation links: 'Programs', 'Community', 'Ways to help', 'About', and a 'Register' link on the right. Below the header is a large banner image showing three young women wearing safety glasses and smiling. The word 'Login' is overlaid on the left side of the banner. Below the banner is a white login form. The form has a section titled 'Login With FIRST Account'. It contains two input fields: 'Email Address' (with a placeholder 'Username') and 'Password'. Below these fields are two checkboxes: 'Show Password' and 'Remember My Login'. A blue 'Login' button is positioned below the checkboxes. At the bottom of the form, there are two links: 'Forgot Password' and 'Not registered yet? Sign Up here'.

Printing your Roster cont'd

Once you log in, you will go here to access your roster-

The screenshot shows the FIRST dashboard with the 'MY TEAMS' tab selected. The 'Team Contacts/Roster' link is circled in red. The dashboard includes a navigation bar with 'PROGRAMS', 'COMMUNITY', 'WAYS TO HELP', and 'ABOUT'. Below the navigation bar is a 'DASHBOARD' header. The main content area is divided into four sections: 'MY TEAMS', 'PARENT/GUARDIAN - YOUTH', 'VOLUNTEER REGISTRATION', and 'MY CLASS PACK ACCOUNT'. The 'MY TEAMS' section contains buttons for 'CREATE NEW TEAM', 'GIVE TO FIRST MISSION', 'REGISTERING YOUTH FAQ', 'RETURNING TEAMS', 'ACCESS THINKSCAPE', and 'SHOPPING CART'. The 'Team List' table shows two teams: 'Seadragons2021' and 'tbd'. The 'Team Options' section includes 'Outstanding Tasks (3)', 'Team Information', 'Payment & Product', and 'Certificates & Awards'. The 'Team Finances' section includes 'Shopping Cart', 'Payment/Product (Receipt)', 'Funds & Grants', and 'Credits'. The 'Team Contacts/Roster' section is circled in red and includes 'Youth Members', 'Primary Contacts', 'Other Contacts', and 'Invite Contacts'.

The screenshot shows the FIRST dashboard with the 'MY TEAMS' tab selected. The 'Team Contacts/Roster' link is circled in red. The dashboard includes a navigation bar with 'PROGRAMS', 'COMMUNITY', 'WAYS TO HELP', and 'ABOUT'. Below the navigation bar is a 'DASHBOARD' header. The main content area is divided into four sections: 'MY TEAMS', 'PARENT/GUARDIAN - YOUTH', 'VOLUNTEER REGISTRATION', and 'MY CLASS PACK ACCOUNT'. The 'MY TEAMS' section contains buttons for 'CREATE NEW TEAM', 'GIVE TO FIRST MISSION', 'REGISTERING YOUTH FAQ', 'RETURNING TEAMS', 'ACCESS THINKSCAPE', and 'SHOPPING CART'. The 'Team List' table shows two teams: 'Seadragons2021' and 'tbd'. The 'Team Options' section includes 'Outstanding Tasks (3)', 'Team Information', 'Payment & Product', and 'Certificates & Awards'. The 'Team Finances' section includes 'Shopping Cart', 'Payment/Product (Receipt)', 'Funds & Grants', and 'Credits'. The 'Team Contacts/Roster' section is circled in red and includes 'Youth Members', 'Primary Contacts', 'Other Contacts', and 'Invite Contacts'. The 'Team Events' section includes 'Team Registration does not guarantee that events are available in your area. If you cannot locate an event in our system, please contact your local partner at: Local Support'.

UNEARTHED™

LEGO LEAGUE
DISCOVER

Printing your Roster cont'd

After you click 'Manage Contacts', it will take you to this screen, where you print your

TEAM CONTACTS

< Back to Dashboard

CONTACTS

FIRST® requires all team members to register electronically. We understand there are extenuating circumstances. If a team member is unable to register electronically, please email the [Program Delivery Partner \(PDP\)](#) in your area to request the paper-copy Consent and Release Form.

FIRST LEGO League Explore Team# 202300923

PRINTABLE ROSTER

YOUTH PARTICIPATION

(Optional) How many youth participants contributed to your team that made it to the system?

Number of Youth Participants on this Team

UPDATE

YOUTH MEMBERS

INVITE CONTACTS **QR CODE LINK**

Youth cannot be viewed because you are either: a Team Administrator or either one or both of the Lead Coach/Mentors do not meet all the requirements.

▶ Parent Guardian Invitation

As you can see, mine is greyed out and has help text. I am unable to print because I do not have a lead coach 1 and a lead coach 2 assigned and passed the youth protection screening (ypp)

Roster Cont'd

If your students are not listed on your roster with a green check mark, then they are missing something. Students are required by *FIRST* to be registered electronically.

To make this easier, *FIRST* has created Express Enrollment! Instructions for Express Enrollment [here](#)

You must bring the printed roster to every event your team!





UNEARTHED



DECODE
PRESENTED BY RTX



REBUILT
PRESENTED BY HANS

Semifinal Info-

- Run the same as a Qualifier
- Expect a higher level of competition
 - Tougher judging
 - Higher robot scores
- Teams held to a higher standard

6 teams advance from each Semifinal to the
State Championship 2/1/26

State Info- Western WA

- Short turn around between the second Semifinal weekend and State.
- Teams attending will need to email a spreadsheet of all attendees in excel for attendance at Amazon. A sample you can use will be posted in the blog next week.
- There are no concessions available at the Amazon event, and you are in Seattle on a Sunday. – have a plan for lunch for your team, ideally ordered and picked up by a willing parent.
- DO NOT bring mats and mission models to the event, you will be sent back to your car to put them away!

State info cont'd

Free parking is available for cars after 7am.

There is no bus parking available

No teams will be allowed in the building until 8am. If you are early, be prepared to wait outside.

When the doors open, preregistered adults should go check in your team at the Amazon desk, students should wait outside until the team has been checked in with Amazon and received their badges.

Badges must be worn AT ALL TIMES in the building.

Once your team has been checked in and badges have been distributed, head upstairs with your team roster and check in like you would at any other event.



What's after State?

The 2 Champions award winning teams (one from East and one from West) will each get a spot to World Festival in Houston.

The Champions award finalist teams (one from East and one from West) will get first choice out of the FLL Open Invitational Events.

Once the finalists have chosen, the remaining open spots will open for signups to the award winning teams from the 2 state championships.

Teams will be selected at random for each event, so make sure you only sign up for events you can actually attend.

If there are remaining spots, the sign up will open to teams that attended the state events.



What's after State cont'd-

FLL Open Invitational Events-

This year I have-

- Canada (1 spot) June 17-20, 2026
- Greece (1 spot) May 8-10, 2026
- Korea (1 spot) July 3-5, 2026
- California (2 spots) May 29-June 1, 2026
- Georgia (1 spot) June 5-7, 2026
- Massachusetts (2 spots) June 12-14, 2026



UNEARTHED



DECODE
PRESENTED BY RTX



REBUILT
PRESENTED BY HANS

Important Links-

Youth Registration- Both **Challenge** and **Explore**

- <https://www.firstinspires.org/programs/youth-registration>

FIRST LEGO League Season Materials-

- <https://www.firstinspires.org/resources/library/fll/season-materials>

FLL Blog-

- <https://firstwa.org/fll-blog/>





Questions?